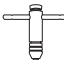




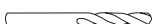




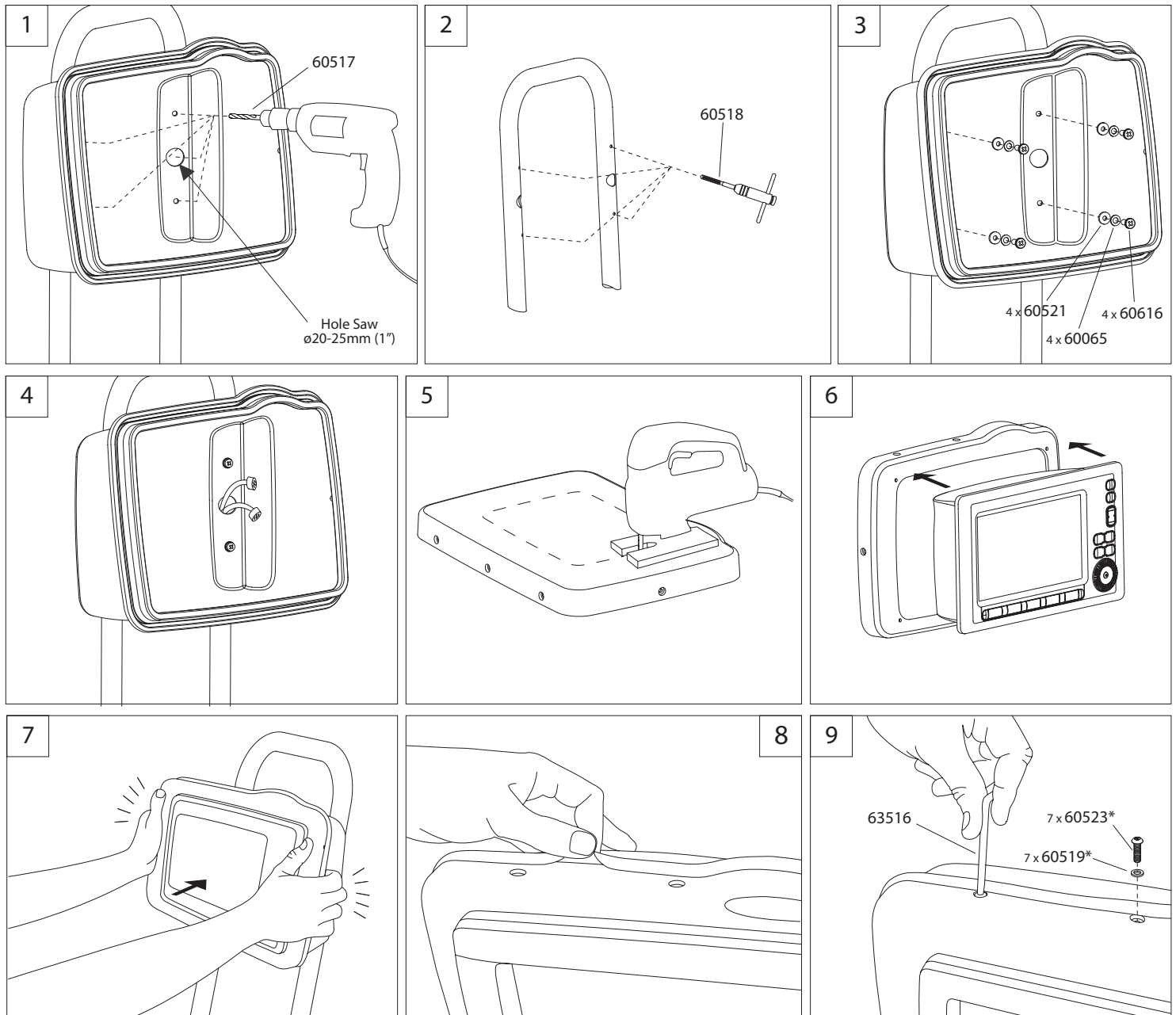
Scanstrut Scanpod Installation Instructions

Helm Pod

Parts List		Qty.
	M6 x 16mm Posidrive 60616	4
	6mm Stainless Steel Washer 60065	4
	Neoprene washer 60521	4
	M5 x 20mm Pin torx 60523	7*
	5mm silicone washer 60519	7*
	Helm Pod Back + Seal	1
	Helm Pod Front	1
	Expanded Polyethylene Seal 190SPH1 (190SPH2 for 2i & 4i Pods)	2

Tools Required			
	Tap Wrench		Jigsaw/Spiral Saw
	No.3 Posidrive		Hole Saw ø20-25mm (1")
	Power drill		

Tools Included		
	ø5.0 mm drill bit	(60517)
	M6x1.0mm tap	(60518)
	T25 Pin torx Key Wrench	(63516)



* Quantity is x9 for 15" Pods and x6 for 2i and 4i Pods